

This manual is for reference and historical purposes, all rights reserved.

**This page is copyright© by M. Butkus, NJ.**

This page may not be sold or distributed without the expressed permission of the producer

I have no connection with any camera company

On-line camera manual library

This is the full text and images from the manual. This may take 3 full minutes for the PDF file to download.

**If you find this manual useful, how about a donation of \$3 to: M. Butkus, 29 Lake Ave., High Bridge, NJ 08829-1701 and send your e-mail address so I can thank you. Most other places would charge you \$7.50 for a electronic copy or \$18.00 for a hard to read Xerox copy.**

**This will allow me to continue to buy new manuals and pay their shipping costs.**

**It'll make you feel better, won't it?**

**If you use Pay Pal or wish to use your credit card,  
click on the secure site on my main page.**



KODAK

# KODAKS

AND

## KODAK SUPPLIES



EASTMAN KODAK COMPANY

ROCHESTER, NEW YORK

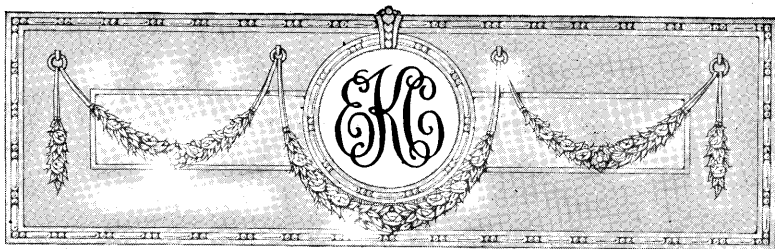
"THE KODAK CITY"

# “KODAK”

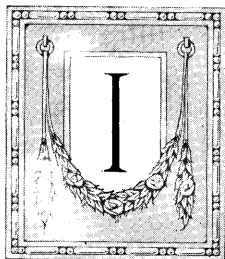
Is our registered and common-law trade mark and cannot be rightfully applied except to goods of our manufacture. When a dealer tries to sell you a camera or films or other goods not of our manufacture under the Kodak name, you can be sure that he has an inferior article that he is trying to market on the Kodak reputation, and he also makes himself liable to suit by us for damages and injunction.



*If it isn't an Eastman,  
it isn't a Kodak*



## The Whole World Kodaks



IN the whole world there is probably no trade mark name so well known; there is probably no specific manufactured article of any kind so widely distributed as the Kodak.

Surely an enviable distinction, but of more importance, both from your standpoint and our own, are the reasons why this is so.

The whole world makes pictures because the appeal of photography is universal—the desire for pictures of the things that interest the individual is innate in mankind.

And the whole world Kodaks because the peoples of Europe and Australia, of the Orient and of the Occident, as well as of this hemisphere, have come to know that in the photographic field, the Kodak is preeminent in quality and dependability as no other one article in any other field is; and they have come to the further realization of the fact, even though they never may have heard the phrase—Kodak means photography with the bother left out.

“The whole world Kodaks” then, because of the convenience—the simplicity of the Kodak. Thirty-two years ago, we started to manufacture photographic goods. In the production of these goods, we conceived the idea of a camera which would make picture taking easier than any of the then existing cameras, and in 1888, or twenty-four years ago, we offered such a camera, built

upon the idea of simplicity. This camera was considered a remarkably compact and ingenious instrument. Its simplicity made it very popular. It was the first Kodak.

To-day the idea upon which this Kodak was built still obtains. It has been the underlying idea in the construction of every Kodak, year after year, from that time up to the present.

Twenty-four years of Kodak making, twenty-four years of striving after simplicity, have produced the marvelously simple Kodaks of to-day, which, if compared with the model of 1888, the simplest camera of its time, would make it seem a crude, clumsy, subject for ridicule. Simplicity, combined with quality and dependability, is the foundation of the Kodak reputation.

“The whole world Kodaks” because we have simplified as well all the processes for the making of the pictures. The Kodak Film Tank has made development, that former bugbear for the beginner, a perfectly simple matter. It will automatically develop film without the use of a dark room, just as well for the novice as for the veteran, and do it more perfectly than could an expert by the old dark room method. The transparent non-curling Kodak film and Velox paper have made the finishing of prints a simple delight. The dark room is absolutely eliminated. All chemicals come ready prepared; the carefully written instruction books explain briefly but clearly every step of picture making for those who wish to do it all.

But if you prefer not to develop and print, the old offer—“you press the button ; we do the rest”—holds good, not only so far as we are concerned, but there are thousands of others the world over, who will finish your pictures for you.

“The whole world Kodaks” because Kodakery, as well as simplifying, has wonderfully increased the scope of amateur photography. Faster film, faster lenses, accurate shutters, have made picture taking easy under conditions formerly considered impossible. And Kodak film gives truer color values than does any other film. It has unmatched orthochromatic quality. But

most important of all is the dependability of Kodak Film—the certainty with which it gives the best possible results from every exposure, the latitude which makes up in a remarkable degree for errors of judgment in exposures by the amateur.

“The whole world Kodaks” because there is a Kodak or Brownie camera to suit the requirements and the purse of everyone. The Folding Pocket Kodaks, differing little except in size, are, perhaps, best suited to the average man or woman. The Special Kodaks are equally simple and with their high speed lenses are instruments of wonderful capabilities, while the Speed Kodaks not only cover the special field of their own, which their name indicates, but are perfectly practical for every kind of work that any hand camera will do. And then there is the new Vest Pocket Kodak. Wherever you are going, however cramped for space, this wonderfully compact little camera can accompany you unobtrusively — and it is always ready for action.

The Brownie cameras are often called “little cousins of the Kodaks,” for they are made in Kodak factories by Kodak workmen, and they load in daylight with Kodak cartridges. Very simple in construction, very inexpensive, they are used with marked success, not only by school children, but by thousands of grown up amateurs, the world over.

If you have read so far, a word of warning will not be amiss. So great has the reputation of Kodak become that there are those who would wrongfully trade upon it. Genuine Kodak goods are made only by the Eastman Kodak Company. Look for the name “Eastman” on the goods, taking especial care in the purchase of films, particularly when traveling, that no inferior substitute is thrust upon you. Look for “N. C.” on the carton and “Kodak” on the spool end.

*If it isn't an Eastman, it isn't a Kodak.*

ROCHESTER, NEW YORK  
“The Kodak City”

EASTMAN KODAK CO.

# Automatic Shutters

## Kodak Ball Bearing Shutter

This shutter is automatic and embodies a new principle in shutter construction, operating with remarkable smoothness and precision. The leaves are made in five segments, mounted entirely on ball bearings, and open and close in the form of a star, admitting a much larger amount of light in the same space of time than any other type of shutter. All but the No. 0 work with bulb or finger release and have variable indicated speeds of

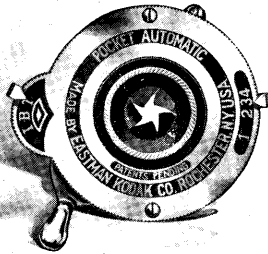
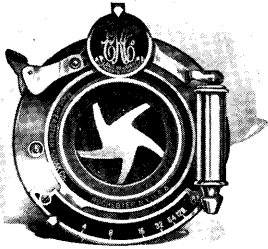
$\frac{1}{25}$ ,  $\frac{1}{30}$  and  $\frac{1}{100}$  second, as well as bulb and bulb time exposures.

They are also fitted with indicator for registering each exposure as made and iris diaphragm.

Supplied with Folding Pocket Kodaks, Nos. 1A, R. R. Type; 3, 3A and 4. The No. 0 is supplied with the Vest Pocket Kodak and is similar to the above in all respects excepting that it works with finger release only, has variable speeds of  $\frac{1}{25}$  and  $\frac{1}{30}$  second and has no registering device.

## Pocket Automatic Shutter

This shutter has star-shaped opening and is automatic in action. For snap-shots, a single pressure of the lever makes the exposure. When set at "B", the shutter opens at one pressure and closes when released. At "T", one pressure opens the shutter and another closes it. Fitted with iris diaphragm stops and regularly supplied with Nos. 1 and 1A Folding Pocket Kodaks, and Nos. 2 and 2A Folding Pocket Brownies.

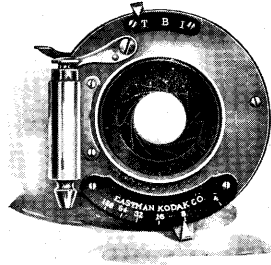




# Automatic Shutters

## F. P. K. Automatic Shutter

This shutter is always set, works with either bulb or finger release for time, bulb or snap-shot exposures. When set at "I" pressure on release makes instantaneous exposure of  $\frac{1}{30}$  of a second. When set at "B", the shutter opens at one pressure and closes when released. At "T", one pressure opens the shutter and another closes it.



This shutter is fitted with iris diaphragm stops, graduated from No. 4 to 128.

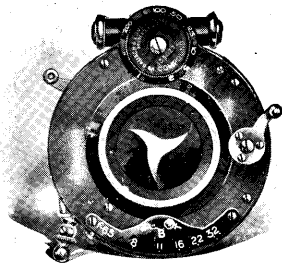
Supplied on the Nos. 3 and 3A Folding Brownies.

## Compound Shutter

The Compound Shutter is an automatic and setting shutter combined. Automatically, either time or bulb exposures may be made, while it may be set for speeds of from 1 to  $\frac{1}{150}$ ,  $\frac{1}{300}$  and  $\frac{1}{600}$  second, according to size of shutter. The shutter leaves are formed of segments opening in star shape, giving even illumination over the entire plate the instant the exposure is started, and an iris diaphragm is supplied for stopping down.

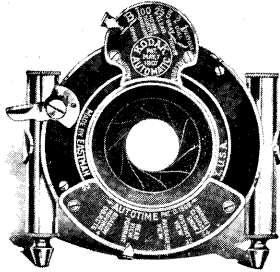
Case is made of aluminum, and accurate adjustments can be made with the shutter in any position.

Regularly supplied on the Nos. 1A, 3 and 3A Special Kodaks and as a special equipment with the Nos. 1A, R. R. Type; 3, 3A, 4 and 4A Folding Kodaks.



# Kodak Automatic Shutter and Kodak Autotime Scale

The Kodak Automatic Shutter is carefully adjusted for time, bulb and instantaneous exposures. It is also graduated for fractional parts of a second, and is unusually accurate upon all its speeds.

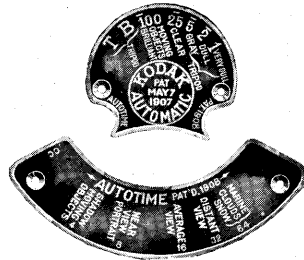


This shutter is regularly fitted with the Kodak Autotime Scale and is supplied as a special equipment on the Nos. 1A R. R. Type, 3, 3A and 4 Folding Pocket Kodaks.

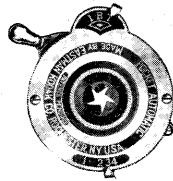
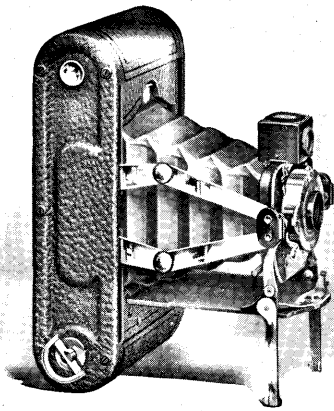
The Kodak Autotime Scale greatly reduces the liability of error in exposure, as it automatically indicates the proper time and stop opening for subjects under any condition of outdoor photography. It is exceedingly simple to use. The speed indicator is merely set at the point on the scale indicating the kind of light prevailing and the diaphragm indicator at the point indicating the character of the subject. No calculations are necessary.

These scales are also supplied at a nominal charge for the following shutters, and will be found a very great convenience. They can be readily attached by any amateur in a few moments. Always designate by Style letter as below.

- Style A. For use with Kodak Ball Bearing shutter,  $2\frac{1}{2} \times 4\frac{1}{4}$  and  $3\frac{1}{4} \times 4\frac{1}{4}$ .  
 Style AA. For use with Kodak Ball Bearing shutter,  $3\frac{1}{4} \times 5\frac{1}{2}$  and  $4 \times 5$ .  
 Style B. For use with F. P. K. Automatic,  $2\frac{1}{2} \times 4\frac{1}{4}$  and  $3\frac{1}{4} \times 4\frac{1}{4}$ , No. 1 S. V. (Blair or Premo) Automatic, or No. 1 B. & L. S. V. Automatic shutters.  
 Style BB. For use with F. P. K. Automatic,  $3\frac{1}{4} \times 5\frac{1}{2}$  and  $4 \times 5$ , No. 2 S. V. (Blair or Premo) Automatic, or No. 2 B. & L. S. V. Automatic shutters.  
 Style C. For use with Kodak Automatic shutter,  $3\frac{1}{4} \times 4\frac{1}{4}$ .  
 Style CC. For use with Kodak Automatic shutter,  $3\frac{1}{4} \times 5\frac{1}{2}$  and  $4 \times 5$ .  
 Style D. For use with B. & L. Automatic and Century Automatic shutters,  $3\frac{1}{4} \times 4\frac{1}{4}$ .  
 Style DD. For use with B. & L. Automatic and Century Automatic shutters,  $3\frac{1}{4} \times 5\frac{1}{2}$  and  $4 \times 5$ .  
 Style DDD. For use with B. & L. Automatic shutter,  $4\frac{1}{4} \times 6\frac{1}{2}$ .  
 Autotime Scale, any style, \$1.00.



# No. 1 Folding Pocket Kodak



This excellent little Kodak is designed for those who wish a compact folding camera, which can be easily carried in the pocket and which will make pictures without the necessity of focusing or estimating distances.

Upon opening the camera the front springs automatically into position, ready at once for making pictures of objects at any distance. A reversible finder makes composition easy, and slight pressure of the shutter lever makes the exposure.

When closed the bed folds over front and bellows, concealing all adjustments, and the camera can then be very conveniently carried in any coat pocket. The lens is a meniscus achromatic of the best quality, and camera is made of aluminum, with best seal grain leather covering and nickeled fittings. With the aid of a Kodak Portrait Attachment this camera will make good size bust portraits.

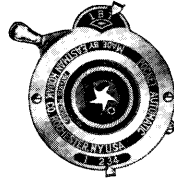
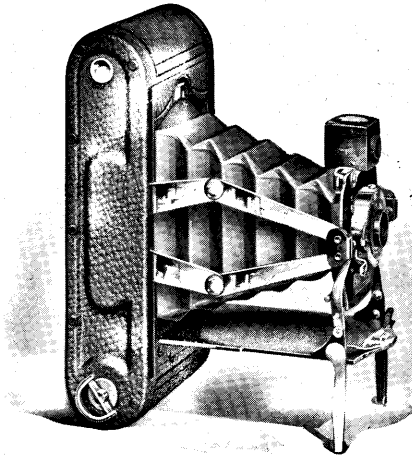
## In Detail

For rectangular pictures,  $2\frac{1}{4} \times 3\frac{1}{4}$  inches. Capacity, 12 exposures without reloading. Size of Kodak,  $6\frac{3}{4} \times 3\frac{1}{2} \times 1\frac{5}{8}$  inches. Weight, 16 ounces. Lens, meniscus achromatic, 4-inch focus. Shutter, Pocket Automatic. (See page 6.) Brilliant reversible finder.

## The Price

|   |         |
|---|---------|
| No. 1 F. P. K., with meniscus achromatic lens, Pocket Automatic shutter | \$10.00 |
| Black Sole Leather Carrying Case, with strap                            | 1.25    |
| N. C. Film Cartridge, 12 exposures, $2\frac{1}{4} \times 3\frac{1}{4}$  | .40     |
| Ditto, 6 exposures  | .20     |
| Kodak Portrait Attachment   | .50     |

## No. 1A Folding Pocket Kodak



Made upon the same principle as the No. 1, this model is operated in precisely the same way, but makes  $2\frac{1}{2} \times 4\frac{1}{4}$  pictures. This is one of the most desirable amateur sizes, as it lends itself to many artistic compositions. It is particularly pleasing for horizontal landscapes, for full and three-quarter length portraits and for bust pictures when the camera is fitted with Kodak Portrait Attachment.

Like the No. 1, the camera requires no focusing, it may be carried in any coat pocket without trouble, and it is always ready for action.

It offers opportunity for making good size, artistic pictures with the minimum of effort and at very slight expense. Made of aluminum, with seal grain covering. All metal parts nicked.

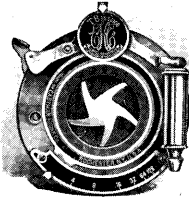
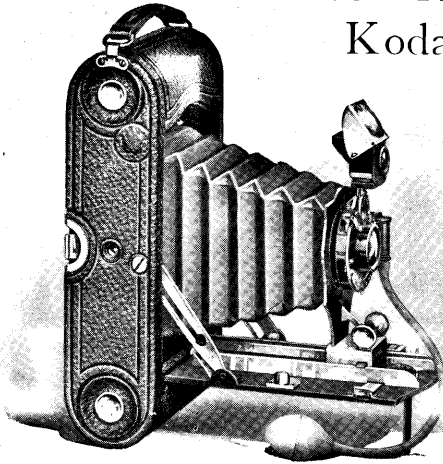
### In Detail

For rectangular pictures,  $2\frac{1}{2} \times 4\frac{1}{4}$  inches. Capacity, 12 exposures without reloading. Size of Kodak,  $7\frac{3}{4} \times 3\frac{7}{8} \times 1\frac{3}{4}$  inches. Weight, 20 ounces. Lens, meniscus achromatic, 5-inch focus. Shutter, Pocket Automatic. (See page 6.) Brilliant reversible finder.

### The Price

|  |         |
|--|---------|
| No. 1A Folding Pocket Kodak, with meniscus achromatic lens, Pocket Automatic shutter . . . . . | \$12.00 |
| Black Sole Leather Case, with shoulder strap . . . . .   | 1.25    |
| N. C. Film Cartridge, 12 exposures, $2\frac{1}{2} \times 4\frac{1}{4}$ . . . . .               | .50     |
| Ditto, 6 exposures . . . . .   | .25     |
| Kodak Portrait Attachment . . . . .  | .50     |

## No. 1A Folding Pocket Kodak—R. R. Type



The  $2\frac{1}{2} \times 4\frac{1}{4}$  size is such an all-around desirable size for amateur pictures that a model with greater capabilities than the regular No. 1A is preferred by many. This model offers the advantage of double R. R. lens, which means more speed and better definition. And the lens is mounted in the Kodak Ball Bearing shutter. This equipment cannot be excelled outside of the anastigmats.

A compact, inexpensive outfit considering its capabilities, and one which, though suitable for the most serious work, will slip readily into the pocket, and is so simple that it may be effectively handled by the beginner.

### In Detail

For rectangular pictures,  $2\frac{1}{2} \times 4\frac{1}{4}$  inches. Capacity, 12 exposures without reloading. Size of Kodak,  $8 \times 2 \times 3\frac{3}{4}$  inches. Weight, 23 ounces. Lens, double combination, rapid rectilinear, speed,  $f. 8$ , focal length, 5 inches. Shutter, Kodak Ball Bearing. (See page 6.) Automatic focusing lock. Two tripod sockets. Brilliant reversible finder.

### The Price

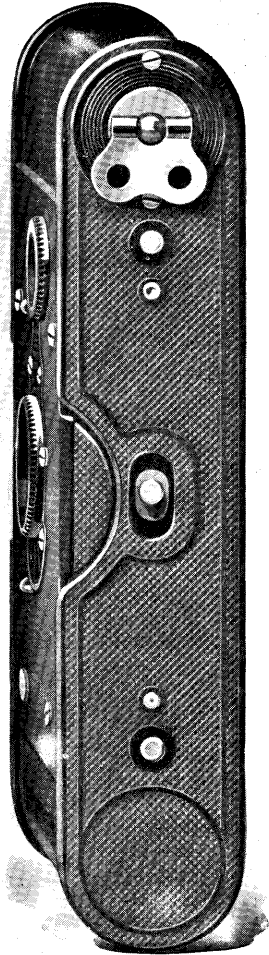
|   |         |
|---|---------|
| No. 1A F. P. K., R. R. Type, R. R. lens, Kodak Ball Bearing shutter . . .           | \$15.00 |
| Ditto, with Kodak Automatic shutter and Zeiss Kodak anastigmat lens, $f. 6.3$ . . . | 40.50   |
| Ditto, with Compound shutter, highest speed $\frac{1}{250}$ second . . . . .        | 46.30   |
| Black Sole Leather Carrying Case, with strap . . . . .                              | 1.25    |
| N. C. Film Cartridge, 12 exposures, $2\frac{1}{2} \times 4\frac{1}{4}$ . . . . .    | .50     |
| Ditto, 6 exposures . . . . .  | .25     |
| Kodak Portrait Attachment . . . . .   | .50     |

## Vest Pocket Kodak

No matter how many cameras you may have, there are times when a vest pocket edition of your larger instrument will be appreciated. That's just what the Vest Pocket Kodak is—a miniature Kodak—so flat and smooth and small as to go readily into a vest pocket, so carefully made as to be capable of the highest grade of work.

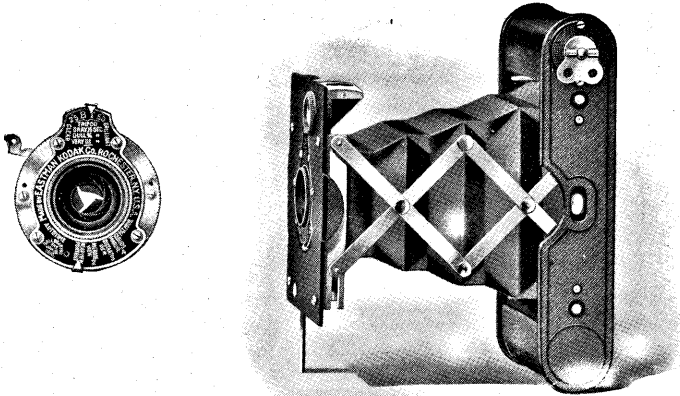
The pictures that this little Kodak make are  $1\frac{5}{8} \times 2\frac{1}{2}$  inches. Owing, however, to the superior definition given by the Vest Pocket Kodak lens, enlargements may readily be made from the negatives. In post-card size ( $3\frac{1}{4} \times 5\frac{1}{2}$  inches) they are particularly attractive, and may be had at fifteen cents each, or the Kodaker may readily make his own, in this size, with a Vest Pocket Kodak Enlarging camera. (See page 39.) Of course, enlargements may be made in a still greater size by the usual methods.

Made to be always ready for action, it is only necessary to pull out the front to its full extent and the Vest Pocket Kodak is in focus for objects at any distance. The shutter is the Kodak Ball Bearing, working automatically for time, bulb,  $\frac{1}{25}$  and  $\frac{1}{50}$  of a second with an exceptionally convenient finger release, and is fitted with iris diaphragm and the Kodak Autotime Scale. The lens is a meniscus achromatic of exceptional quality and each one is given a rigid test.



Actual Size

# Vest Pocket Kodak



The Film Cartridges for the Vest Pocket Kodak contain eight exposures each and, of course, have the Kodak daylight loading feature. Another feature is the extreme simplicity in loading — nothing trappy or fussy about it. Indeed, the operation of the camera is simple in every detail, nothing in the way of simplicity or efficiency having been sacrificed in order to reduce the size.

Quality marks the Vest Pocket Kodak in every detail. It is not made small so that we can produce a cheap camera ; it is made small for the sake of convenience. The small price is simply the result of our manufacturing facilities.

## In Detail

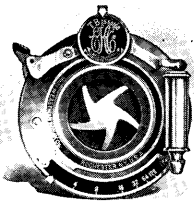
For rectangular pictures,  $1\frac{5}{8} \times 2\frac{1}{2}$  inches. Capacity, 8 exposures without reloading. Size of Kodak,  $1 \times 2\frac{3}{8} \times 4\frac{3}{4}$ . Weight, 9 ounces. Lens, meniscus achromatic, 3-inch focus. Shutter, Kodak Ball Bearing No. 0. (See page 6.) Brilliant reversible finder. All metal body, black enamel finish and black leather bellows.

## Price

|  |        |
|--|--------|
| Vest Pocket Kodak, meniscus achromatic lens and Kodak Ball Bearing shutter . . . . . | \$6.00 |
| Leather Case . . . . .   | .75    |
| N. C. Film Cartridge, 8 exposures, $1\frac{5}{8} \times 2\frac{1}{2}$ . . . . .      | .20    |
| Kodak Portrait Attachment . . . . .  | .50    |

## No. 3 Folding Pocket Kodak

Those who prefer pictures of the  $3\frac{1}{4} \times 4\frac{1}{4}$  size will find this model a wonderfully compact, convenient and efficient camera, with which they can secure pictures of this pleasing proportion.



It is a splendid camera for snap-shot photography, for it is fitted with the best R. R. lens obtainable, mounted in the Kodak Ball Bearing shutter. This shutter having star shaped leaves, admits much more light than the ordinary two winged shutter, and it is graduated for  $\frac{1}{25}$ ,  $\frac{1}{30}$  and  $\frac{1}{60}$  second, as well as for time and bulb exposures.

The camera is equipped with rising and sliding front—a great convenience in architectural and many forms of landscape photography, and an automatic focusing lock is provided so that the camera can quickly be brought to focus for any distance. It has brilliant reversible finder, two tripod sockets and automatic standard clamp locking firmly at any point on the bed where released.

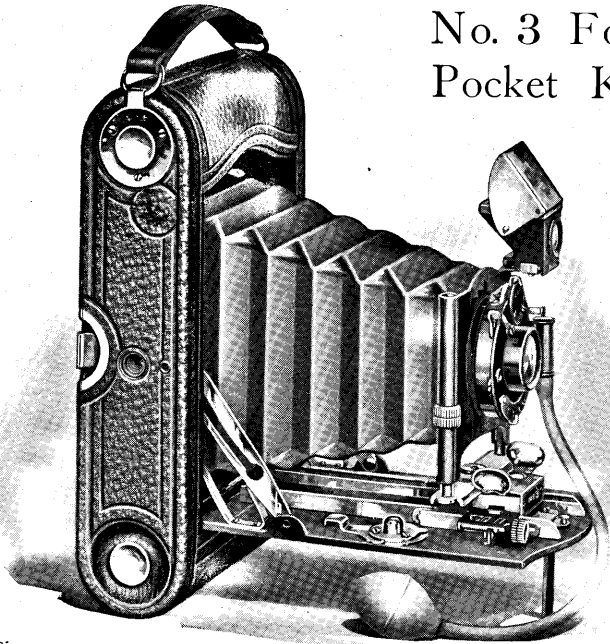
While the camera, of course, is designed for the use of our roll films, it can be loaded with plates at any time by the addition of a simple plate adapter or combination back. This is interchangeable with the regular back, is provided with ground glass for focusing and takes double plate holders. (See similar back illustrated on page 16.)

For those who make lantern slides, this camera is especially desirable, for the size,  $3\frac{1}{4} \times 4\frac{1}{4}$ , is just right for slide making without either enlargement or reduction.

The instrument can be readily carried in the ordinary coat pocket and is handsomely finished throughout. Box and bed are of aluminum, metal parts are highly nickered, and covering is of fine quality grain leather.



## No. 3 Folding Pocket Kodak



### In Detail

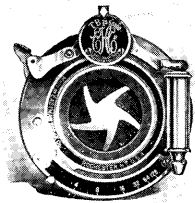
For rectangular pictures,  $3\frac{1}{4} \times 4\frac{1}{4}$  inches. Capacity, 12 exposures without reloading. Size of Kodak,  $7\frac{1}{2} \times 4\frac{1}{2} \times 1\frac{3}{4}$  inches. Weight, 23 ounces. Lens, double combination, rapid rectilinear, speed, *f.* 8, focal length, 5 inches. Shutter, Kodak Ball Bearing, (See page 6.) Rising and sliding front. Two tripod sockets. Brilliant reversible finder with hood. Automatic focusing lock.

### The Price

|  |         |
|--|---------|
| No. 3 F. P. K., R. R. lens, Kodak Ball Bearing shutter . . . . .                             | \$17.50 |
| Ditto, with Kodak Automatic shutter . . . . .  | 22.50   |
| Ditto, with Kodak Automatic shutter and Zeiss Kodak anastigmat lens, <i>f.</i> 6.3 . . . . . | 43.00   |
| Ditto, with Compound shutter, highest speed $\frac{1}{250}$ second . . . . .                 | 48.80   |
| Black Sole Leather Case, with strap . . . . .  | 1.25    |
| Combination Back, for $3\frac{1}{4} \times 4\frac{1}{4}$ plates . . . . .                    | 3.50    |
| Double Glass Plate Holder, $3\frac{1}{4} \times 4\frac{1}{4}$ . . . . .                      | 1.00    |
| N. C. Film Cartridge, 12 exposures, $3\frac{1}{4} \times 4\frac{1}{4}$ . . . . .             | .70     |
| Ditto, 6 exposures . . . . .   | .35     |
| Ditto, "double-two" cartridge, 4 exposures . . . . .   | .25     |
| Kodak Portrait Attachment . . . . .  | .50     |

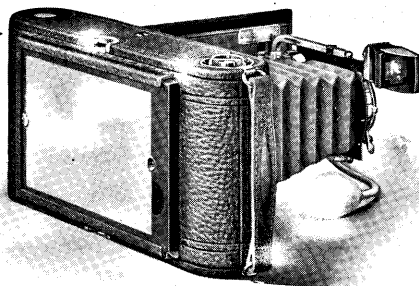
## No. 3A Folding Pocket Kodak

Of all amateur pictures, the 3A ( $3\frac{1}{4} \times 5\frac{1}{2}$ ) is the most popular size. Its proportions are just right for post-cards, it is unusually effective for landscape photography and for street scenes when used horizontally; while vertically it is ideal for portraiture whether full length, or head and shoulders with the Kodak Portrait Attachment. It is a general favorite among tourists, automobilists, vacationists and others requiring a light, compact outfit which can be thoroughly depended upon.



This model is fitted with Kodak Ball Bearing shutter, which makes it especially effective for instantaneous work, and the best R. R. lens obtainable outside of the anastigmats. It has rising, sliding and falling front, automatic focusing lock, reversible finder and two tripod sockets. And while thus equipped for the most serious work, it can be effectively handled even by the absolute novice.

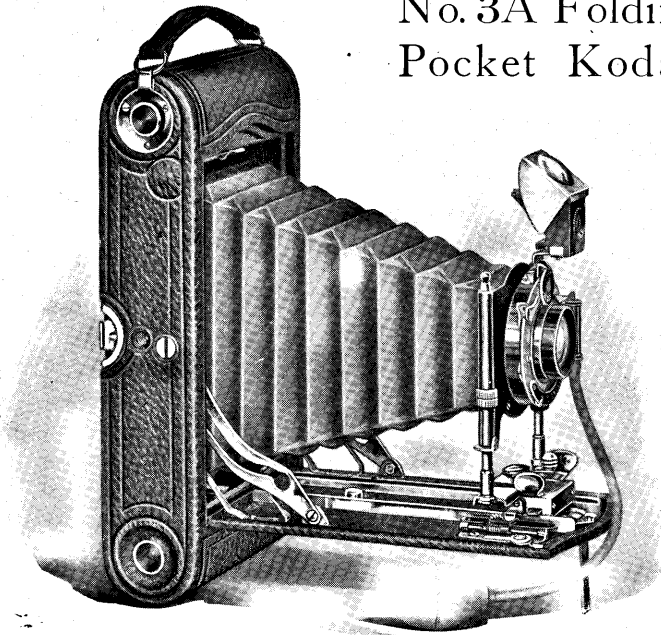
Like the No. 3, it will accommodate plates as well as films by the simple addition of a combination back, which is interchangeable with the regular back. This may be secured from any dealer, it is fitted with ground glass and takes double plate holders.



Showing Combination Back with Focusing Screen

This camera is covered with fine grain best quality leather, has nicked fittings and in every detail is an attractive and capable instrument.

## No. 3A Folding Pocket Kodak



### In Detail

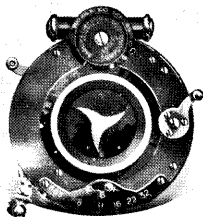
For rectangular pictures,  $3\frac{1}{4} \times 5\frac{1}{2}$  inches. Capacity, 10 exposures without reloading. Size of Kodak,  $9\frac{1}{2} \times 4\frac{3}{4} \times 1\frac{7}{8}$  inches. Weight, 41 ounces. Lens, double combination, rapid rectilinear, speed, *f.* 8, focal length,  $6\frac{1}{2}$  inches. Shutter, Kodak, Ball Bearing. (See page 6.) Two tripod sockets. Brilliant reversible finder with hood. Automatic focusing lock for films. Double focusing scale for films or plates.

### The Price

|   |         |
|---|---------|
| No. 3A F. P. Kodak, R. R. lens, Kodak Ball Bearing shutter . . . . .  | \$20.00 |
| Ditto, with Kodak Automatic shutter . . . . .   | 25.00   |
| Ditto, with Compound shutter, highest speed $\frac{1}{250}$ second, and Zeiss Kodak<br>anastigmat lens, <i>f.</i> 6.3 . . . . . | 61.40   |
| Black Sole Leather Case, with strap . . . . .   | 1.50    |
| Combination Back . . . . .  | 3.50    |
| Double Glass Plate Holders, $3\frac{1}{4} \times 5\frac{1}{2}$ , each . . . . .   | 1.00    |
| N. C. Film Cartridge, 10 exposures, $3\frac{1}{4} \times 5\frac{1}{2}$ . . . . .  | .70     |
| Ditto, 6 exposures . . . . .  | .40     |
| Ditto, "double-two" cartridge, 4 exposures . . . . .  | .30     |
| Kodak Portrait Attachment . . . . .   | .50     |

## Special Kodaks

The idea of the Special Kodaks is to provide an instrument for general amateur photography, which, without sacrifice of the underlying idea of Kodak simplicity, will leave nothing to be desired by the user, whether he be a beginner or an expert.



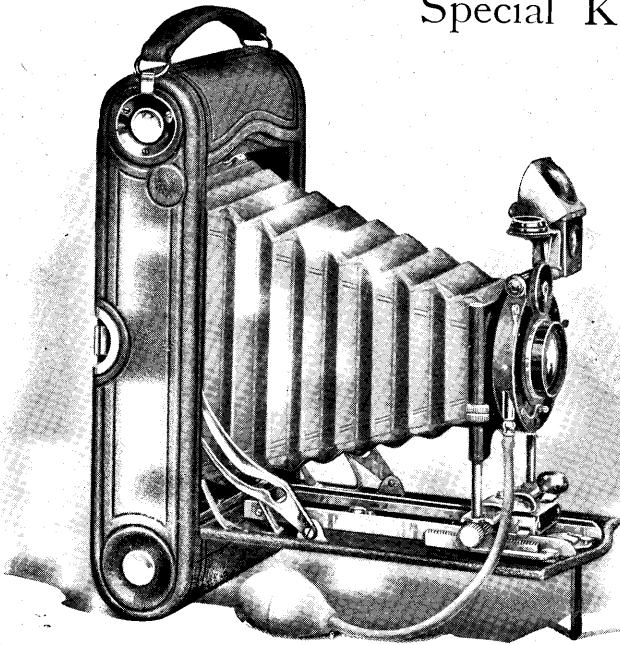
Aside from the requirements of the focal plane specialists, for whom we supply the Speed Kodaks, there is no condition under which amateur pictures can possibly be made, in which these cameras will not produce the best of results. Two years ago, we offered the No. 3A Special, last year, the No. 3, and this year we have added the No. 1A Special. So that now those who wish the very best to be had, can get a Special Kodak in any one of the three most popular amateur sizes.

These cameras are fitted with the Zeiss Kodak Anastigmat lens and Compound shutter, which latter attains a speed of  $\frac{1}{250}$  second in the 1A and 3 sizes, and  $\frac{1}{500}$  second in the 3A size. These fast lenses give the Specials a great advantage over the ordinary camera in dull lights, and in combination with the Compound shutter, make them second only to cameras having focal plane shutters for photographing rapidly moving objects.

They have rising and sliding fronts, reversible finders, rack and pinion for focusing, spirit levels, in fact every convenience that can be put into a film camera. The 3 and 3A sizes will take plates by addition of a combination back (supplied extra).

Made as the last word in photographic perfection, these cameras are beautifully finished. Covered with genuine Persian morocco, with rich black leather bellows and nicked fittings, they bear the impress of the quality that is in them.

## Special Kodaks



### In Detail

Size of Kodak, No. 1A,  $2 \times 3\frac{3}{4} \times 8$  inches; No. 3,  $1\frac{7}{8} \times 4\frac{1}{2} \times 8$  inches; No. 3A,  $9\frac{1}{2} \times 4\frac{3}{4} \times 2$  inches. Weight, No. 1A, 30 ounces; No. 3, 32 ounces; No. 3A, 42 ounces. Lens, Zeiss Kodak anastigmat, speed,  $f. 6.3$ , focal length, No. 1A, 5 inches; No. 3, 5 inches; No. 3A,  $6\frac{1}{2}$  inches. Shutter, Compound. (See page 7.) Two tripod sockets. Brilliant reversible finder, with hood. Spirit level. Rack and pinion for focusing.

### The Price

|   | No. 1A<br>$2\frac{1}{2} \times 4\frac{1}{4}$ | No. 3<br>$3\frac{3}{4} \times 4\frac{1}{4}$ | No. 3A<br>$3\frac{3}{4} \times 5\frac{1}{2}$ |
|---|--|---|--|
| Special Kodak, Zeiss Kodak anastigmat lens, $f. 6.3$ , and Compound shutter . . . . . | \$50.00                                      | \$52.00                                     | \$65.00                                      |
| Grain Leather, Velvet Lined Case, with strap . . . . .                                | 2.75   | 2.75  | 3.00   |
| Combination Back . . . . .  |  | 4.00  | 4.00   |
| Double Glass Plate Holders, each . . . . .  |  | 1.00  | 1.00   |
| N. C. Film Cartridge, 12 exposures . . . . .  | .50  | .70   |  |
| Ditto, 10 exposures . . . . .   |  |   | .70  |
| Ditto, 6 exposures . . . . .  | .25  | .35   | .40  |
| Ditto, "double-two" cartridge, 4 exposures . . . . .                                  |  | .25   | .30  |

## No. 4 Folding Pocket Kodak

The No. 4 Folding Pocket Kodak is designed to provide those who prefer 4 x 5 pictures with a camera having the same conveniences and the same dependability as the 3A. It is, in fact, similar to that model in every essential respect excepting in the size of the pictures which it makes. And there are many photographers who prefer the 4 x 5 proportion on account of its suitability for compositions of any character in either the vertical or horizontal position, and also the comparatively large size which it is possible to get of the objects in the composition.



The optical equipment is precisely the same as that of the 3A — the best quality of R. R. lens, mounted in the Kodak Ball Bearing shutter. This equipment makes the camera very effective for snap-shot work as the lens works at *f.* 8 and the star shaped shutter leaves admit much more light in a given time than does the ordinary shutter.

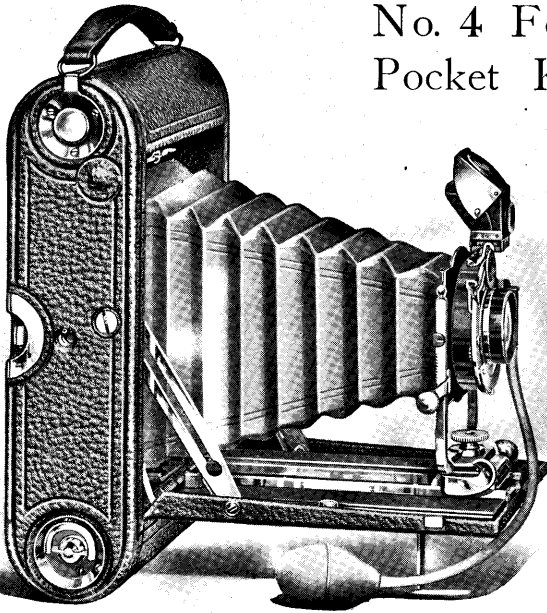
The camera is provided with rising and sliding front, reversible brilliant finder, automatic focusing lock and two tripod sockets. While thus equipped for a wide range of work, it may be carried in a top coat pocket and may be easily handled by the beginner as well as the advanced amateur.

Fitted with Kodak Portrait Attachment, this model is excellent for bust portraits, as it can be focused as close as 2 feet 8 inches to the subject, producing a very large portrait.

A glass plate adapter with focusing screen, and interchangeable with the regular back, may be had from your dealer, and the camera can then be loaded with plates whenever desired.

Constructed with the usual Kodak skill, covered with best quality seal grain leather and all metal parts are beautifully nickeled.

## No. 4 Folding Pocket Kodak



### In Detail

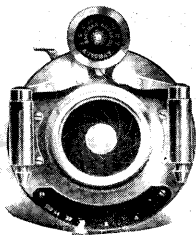
For rectangular pictures, 4 x 5 inches. Capacity, 12 exposures without reloading. Size of Kodak, 9 x 5 $\frac{3}{4}$  x 2 $\frac{1}{4}$  inches. Weight, 2 pounds 11 ounces. Lens, double combination, rapid rectilinear, speed, *f.* 8, focal length, 6 $\frac{1}{2}$  inches. Shutter, Kodak Ball Bearing. (See page 6) Two tripod sockets. Brilliant reversible finder. Automatic focusing lock.

### The Price

|  |         |
|--|---------|
| No. 4 F. P. K., R. R. lens, Kodak Ball Bearing shutter . . . . .   | \$20.00 |
| Ditto, with Kodak Automatic shutter . . . . .  | 25.00   |
| Ditto, with Compound shutter, highest speed $\frac{1}{250}$ second, and Zeiss Kodak<br>anastigmat lens, <i>f.</i> 63 . . . . . | 61.40   |
| Black Sole Leather Carrying Case, with strap . . . . .   | 1.50    |
| Glass Plate Adapter, 4 x 5, with ground glass . . . . .  | 3.50    |
| Double Glass Plate Holders, 4 x 5, each . . . . .  | 1.00    |
| N. C. Film Cartridge, 12 exposures, 4 x 5 . . . . .  | .90     |
| Ditto, 6 exposures . . . . .   | .45     |
| Ditto, "double-two" cartridge, 4 exposures . . . . .   | .30     |
| Kodak Portrait Attachment . . . . .  | .50     |

## No. 4A Folding Kodak

For very large size pictures, we offer the No. 4A Folding Kodak—a camera which combines all the simple and convenient Kodak features in a very light and compact camera, considering the proportions of the picture it makes. It is fully equipped for out of the ordinary work, as well as for snap-shot and general amateur photography.



One of its special features is its adaptability to home portraiture. Fitted with the Kodak Portrait Attachment, it will make bust portraits up to the full size of the film, as it may be operated as close as  $3\frac{1}{2}$  feet to the subject. A plate adapter with focusing screen, interchangeable with the regular back, will permit the use of dry plates if desired.

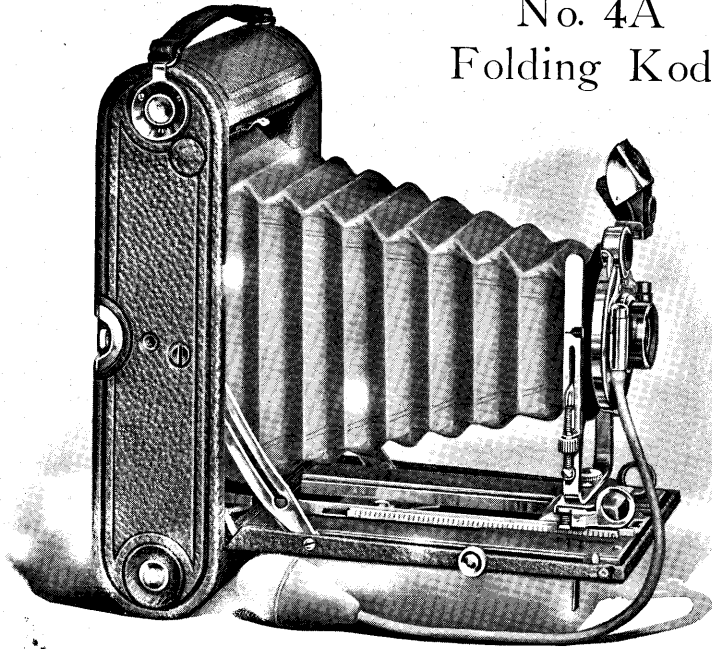
The shutter supplied with this model is a double valve automatic, which works not only for time and bulb exposures, but is also graduated in fractional parts of a second from  $\frac{1}{100}$  to 1. The lens is a Rapid Rectilinear of the same high quality as those supplied with the preceding Kodaks.

The camera is equipped with rising and sliding front, rack and pinion for easy focusing two tripod sockets and a very positive automatic standard clamp. The regular finder is a brilliant reversible, but when desired, a direct view finder can be furnished for specially quick snap-shot work with the camera held on a level with the eyes.

Constructed with the same care and attention to detail as the preceding model, the No. 4A is just as simple to operate, and is finished in the same style, with seal grain covering and nicked fittings.



## No. 4A Folding Kodak



### In Detail

For rectangular pictures,  $4\frac{1}{4} \times 6\frac{1}{2}$  inches. Capacity, 6 exposures without reloading. Size of Kodak,  $11 \times 6\frac{1}{2} \times 2\frac{5}{8}$  inches. Weight, 4 pounds 4 ounces. Lens, double combination, rapid rectilinear, speed,  $f. 8$ , focal length,  $8\frac{1}{4}$  inches. Shutter, B. & L. Automatic. Rising and sliding front. Rack and pinion for focusing. Two tripod sockets. Brilliant reversible finder with hood.

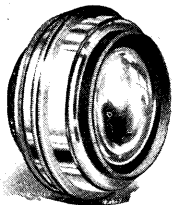
### The Price

|   |         |
|---|---------|
| No. 4A F. Kodak, R. R. lens, B. & L. Automatic shutter . . . . .                | \$35.00 |
| Ditto, with Zeiss Kodak anastigmat lens, $f. 6.3$ . . . . .                     | 72.50   |
| Ditto, with Compound shutter, highest speed $\frac{1}{10}$ second . . . . .     | 83.45   |
| Black Sole Leather Case, with strap . . . . .                                   | 2.50    |
| Glass Plate Adapter, with ground glass . . . . .                                | 5.00    |
| Double Glass Plate Holders, each . . . . .                                      | 1.25    |
| N. C. Film Cartridge, 6 exposures, $4\frac{1}{4} \times 6\frac{1}{2}$ . . . . . | .65     |
| Ditto, "double-two" cartridge, 4 exposures . . . . .                            | .45     |
| Direct View Finder . . . . .  | 3.00    |
| Kodak Portrait Attachment . . . . .   | .50     |

## No. 1A Speed Kodak

Simple to operate, small enough to be carried in a top coat pocket, this Kodak, as its name implies, is suitable for the very highest speed photography.

And although it will easily make pictures of the fastest moving objects, such as automobiles, express trains, athletes and race horses, it can be just as easily used for home portraiture, and all other ordinary amateur work.

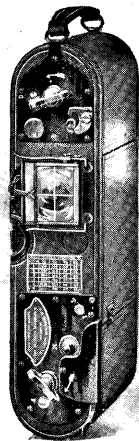


Its high speed is attained by the incorporation of a focal plane shutter in its construction. This shutter is of the well known Graflex

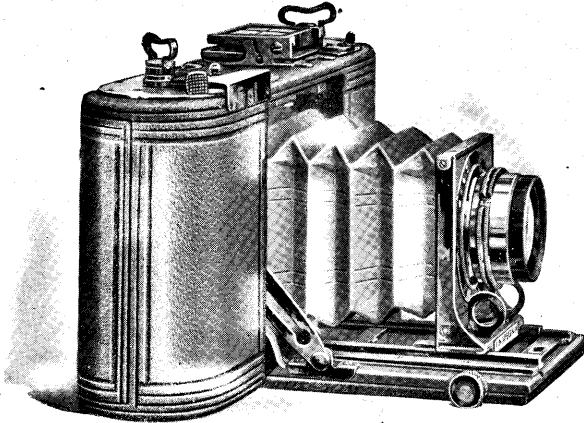
Focal Plane type, which is provided with a curtain having a series of slots of varying widths. This curtain, in combination with a speed tension regulator, permits a latitude of exposures varying from  $\frac{1}{1000}$  of a second to very slow instantaneous, bulb, or time exposures. The shutter can be instantly wound by the half turn of a key, and released by merely touching a lever.

The finder of the No. 1A Speed is of the direct view type for use with the camera held on a level with the eyes. This is supplemented by a mirror attachment, which springs up at an angle of 45 degrees, for location and composition of subjects with the Kodak held in any other position.

Rack and pinion is furnished for easy focusing, metal parts have gun-metal finish, and covering is a very fine grain leather. The size of picture,  $2\frac{1}{2} \times 4\frac{1}{4}$ , is suitable for any style of composition, and is very desirable for portraiture.



# No. 1A Speed Kodak



## In Detail

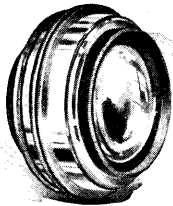
For rectangular pictures,  $2\frac{1}{2} \times 4\frac{1}{4}$  inches. Capacity, 12 exposures without reloading. Size of Kodak,  $2\frac{1}{4} \times 4\frac{1}{2} \times 9\frac{3}{4}$  inches. Weight, 3 pounds. Shutter, Graflex focal plane, speed  $\frac{1}{1000}$  second to slow instantaneous. Rack and pinion for focusing, automatic standard clamp, and tripod socket. Direct view finder with mirror attachment. Automatic safety blind for protecting film when shutter is wound.

## The Price

|  |         |
|--|---------|
| No. 1A Speed Kodak, Graflex focal plane shutter, without lens . . . . .          | \$38.00 |
| Ditto, with Zeiss Kodak anastigmat lens No. 2, <i>f.</i> 6.3 . . . . .           | 60.00   |
| Ditto, with Series IIb B. & L. Zeiss Tessar lens No. 4, <i>f.</i> 6.3 . . . . .  | 72.50   |
| Ditto, with Cooke Series IV lens No. 25, <i>f.</i> 5.6 . . . . .                 | 76.00   |
| Ditto, with Series Ic B. & L. Zeiss Tessar lens No. 14, <i>f.</i> 4.5 . . . . .  | 78.50   |
| Black Sole Leather Carrying Case, with strap . . . . .                           | 1.50    |
| N. C. Film Cartridge, 12 exposures, $2\frac{1}{2} \times 4\frac{1}{4}$ . . . . . | .50     |
| Ditto, 6 exposures . . . . .   | .25     |

## No. 4A Speed Kodak

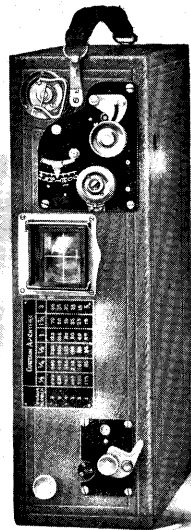
The shape of the pictures made by this camera is of splendid proportions for the very high speed work for which it is adapted, as well as for the general run of amateur work. And the pictures are of that larger size which many photographers, who make a specialty of some particular class of work, prefer.



This camera attains a maximum speed exposure of  $\frac{1}{10000}$  of a second—thanks to the Kodak Focal Plane shutter, which is built into the camera box. The shutter is provided with a curtain having an adjustable opening, which, in combination with a speed tension device, regulates the duration of the exposure. The shutter is in no way complicated, but can be easily understood and operated by anyone who follows the simple directions included with the camera.

The 4A Speed shutter, of course, works for time as well as instantaneous exposures, and besides being wonderfully efficient for making pictures of automobiles, aeroplanes, race horses, athletes, and other rapidly moving objects, is a perfectly satisfactory camera for home portraiture and other work for which the ordinary camera is regularly used.

The camera is fitted with direct view finder, it is beautifully finished, metal parts are nickered, and covering is of the finest grain leather.



## Brownie Enlarging Cameras

With one of these cameras it's just as easy to make first-class enlargements from your favorite negatives as it is to print on Velox paper. In fact, the two processes are very much the same excepting that, in ordinary printing, the negative and paper are in close contact, while in enlarging, the paper is at some distance from the negative, with a lens in between.

The Brownie Enlarging Camera consists of a light-tight cone with attachments to hold a negative at the small end, and a sheet of Bromide or Velox paper at the other. They are collapsible so that they fold flat and may be conveniently carried in a suit case.



- |   |        |
|---|--------|
| No. 2. Brownie Enlarging Camera, for 5 x 7 enlargements from 2¼ x 3¼ negatives . . . . .                | \$2.00 |
| No. 3. Ditto, for 6½ x 8½ enlargements from 3¼ x 4¼ negatives . . . . .                                 | 3.00   |
| No. 4. Ditto, for 8 x 10 enlargements from 4 x 5 negatives (will also take 3¼ x 5½ negatives) . . . . . | 4.00   |

## V. P. Kodak Enlarging Camera

Made upon the same principle as the Brownie Enlarging Camera, the Vest Pocket operates in the same simple manner, but it is so small of itself that it is not made collapsible.

It makes 3¼ x 5½ enlargements from 1⅝ x 2½ negatives.

Vest Pocket Kodak Enlarging Camera, \$1.75

## Brownie Enlarging Camera Illuminator

A very convenient device, providing a strong, even light by which to print Brownie or Vest Pocket Enlargements. It is collapsible, but when set up, has the form of a half round, light-proof box with socket through which is inserted an electric light bulb.

The inner walls of this box are white and act as a splendid reflector when the light is turned on. At the end is a ground glass, which diffuses the light, so that by placing negative end of the enlarging camera in contact with this glass and turning on the electricity, an excellent steady printing light is obtained.

The glass is provided with a hinged protector of ruby cloth, which may be closed as soon as the exposure is completed, and the illuminator then becomes a perfect lamp for the developing and subsequent operations with the paper.

Brownie Enlarging Camera Illuminator, \$3.00